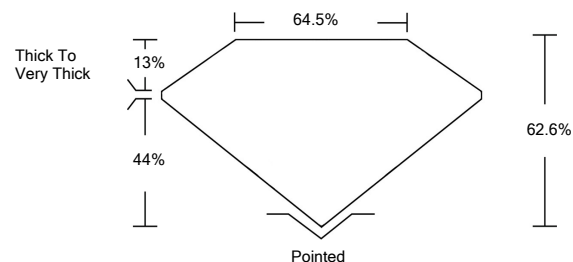




LG457066285

LABORATORY GROWN DIAMOND REPORT

PROPORTIONS



GRADING SCALES

COLOR GRADING SCALE	CL	NC	FT	VL	LT	
	COLORLESS D-F	NEAR COLORLESS G-J	FAINT K-M	VERY LIGHT N-R	LIGHT S-Z	
CLARITY (10x) GRADING SCALE	FL	IF	VVS	VS	SI	I
	FLAWLESS INTERNALLY FLAWLESS	VERY VERY SLIGHTLY INCLUDED	VERY SLIGHTLY INCLUDED	SLIGHTLY INCLUDED	INCLUDED	

The laboratory grown diamond described in this Report (Report) has been graded, tested, analyzed, examined and/or inscribed by International Gemological Institute (IGI). A laboratory grown diamond is one that has essentially the same chemical, physical and optical properties as a mined diamond, with the exception of being grown by man (a manufactured product). IGI employs and utilizes those techniques and equipment currently available to IGI, including, without limitation, 10X magnification, corrected triplet loupe, binocular microscope, master color comparison stones, non-contact-optical measuring device, Diamond Sure™, Diamond View™, Spectrophotometer and such other instruments and/or processes as deemed appropriate by IGI. This Report includes advanced security features. A duly accredited gemologist or jeweler can advise you with respect to the importance of and interrelationship between cut, color, clarity and carat weight. THIS REPORT IS NEITHER A GUARANTEE, VALUATION, NOR APPRAISAL OF THE GEMSTONE DESCRIBED HEREIN. PLEASE REVIEW THE LIMITATIONS AND RESTRICTIONS SET FORTH ONLINE. FOR ADDITIONAL INFORMATION, IMPORTANT LIMITATIONS AND DISCLAIMERS, PLEASE GO TO WWW.IGI.ORG OR CALL 1-888-BUY-IGIS.

© INTERNATIONAL GEMOLOGICAL INSTITUTE, INC.

01/11/2021

IGI Report Number: LG457066285  
Shape and Cutting Style: OVAL BRILLIANT  
Measurements: 9.24 x 6.72 x 4.21 mm

GRADING RESULTS

Carat Weight: 1.70 CARAT  
Color Grade: D  
Clarity Grade: VS 2

01/11/2021  
IGI Report Number: LG457066285

Shape and Cutting Style: OVAL BRILLIANT

Measurements: 9.24 x 6.72 x 4.21 mm

GRADING RESULTS

Carat Weight: 1.70 CARAT

Color Grade: D

Clarity Grade: VS 2

ADDITIONAL GRADING INFORMATION

Polish: EXCELLENT

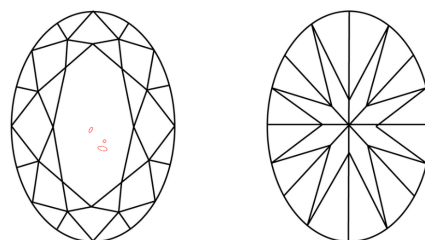
Symmetry: EXCELLENT

Fluorescence: NONE

Inscription(s): LABGROWN IGI LG457066285

Comments: As Grown - No indication of post growth treatment. This Laboratory Grown Diamond was created by High Pressure High Temperature (HPHT) growth process. Type II

CLARITY CHARACTERISTICS



KEY TO SYMBOLS

Red symbols indicate internal characteristics.  
Green symbols indicate external characteristics.

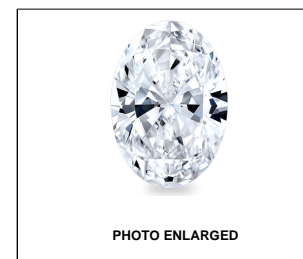
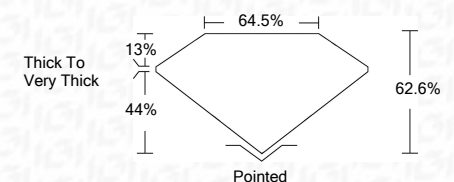


PHOTO ENLARGED



LASERSCRIBE<sup>SM</sup>



ADDITIONAL GRADING INFORMATION

Polish: EXCELLENT  
Symmetry: EXCELLENT  
Fluorescence: NONE  
Inscription(s): LABGROWN IGI LG457066285

Comments: As Grown - No indication of post growth treatment. This Laboratory Grown Diamond was created by High Pressure High Temperature (HPHT) growth process. Type II



IGI

01/11/2021  
IGI Report No. LG457066285  
OVAL BRILLIANT  
9.24 x 6.72 x 4.21 mm  
Carat Weight: 1.70 CARAT  
Color Grade: D  
Clarity Grade: VS 2  
Depth: 62.6%  
Table: 64.5%  
Girdle: Thick To Very Thick  
Culet: Pointed  
Polish: EXCELLENT  
Symmetry: EXCELLENT  
Fluorescence: NONE  
Inscription(s): LABGROWN IGI LG457066285  
Comments: As Grown - No indication of post growth treatment. This Laboratory Grown Diamond was created by High Pressure High Temperature (HPHT) growth process. Type II