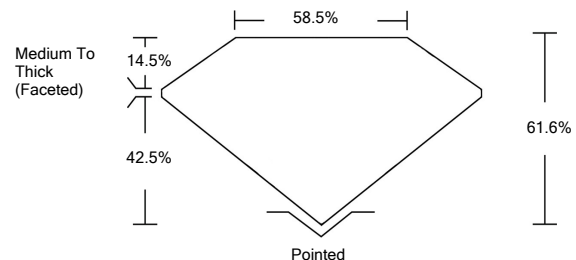




LG459122733

LABORATORY GROWN DIAMOND REPORT

PROPORTIONS



GRADING SCALES

Table with 5 columns for Color Grading Scale (CL, NC, FT, VLT, LT) and Clarity (10x) Grading Scale (FL, IF, VVS, VS, SI, I).

The laboratory grown diamond described in this Report (Report) has been graded, tested, analyzed, examined and/or inscribed by International Gemological Institute (IGI). A laboratory grown diamond is one that has essentially the same chemical, physical and optical properties as a mined diamond...

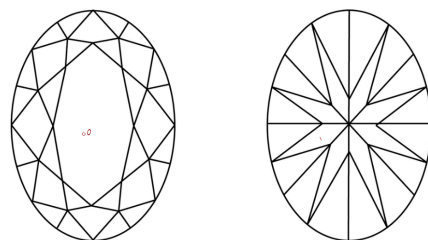
02/03/2021 IGI Report Number LG459122733 Shape and Cutting Style OVAL BRILLIANT Measurements 9.56 x 6.95 x 4.28 mm

GRADING RESULTS Carat Weight 1.79 CARAT Color Grade E Clarity Grade VS 2

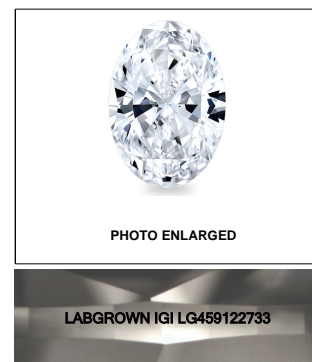
ADDITIONAL GRADING INFORMATION Polish EXCELLENT Symmetry VERY GOOD Fluorescence NONE Inscription(s) LABGROWN IGI LG459122733

Comments: As Grown - No indication of post-growth treatment. This Laboratory Grown Diamond was created by High Pressure High Temperature (HPHT) growth process. Type II

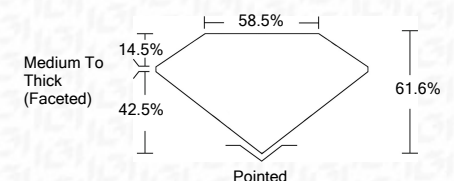
CLARITY CHARACTERISTICS



KEY TO SYMBOLS Red symbols indicate internal characteristics. Green symbols indicate external characteristics.



02/03/2021 IGI Report Number LG459122733 Shape and Cutting Style OVAL BRILLIANT Measurements 9.56 x 6.95 x 4.28 mm GRADING RESULTS Carat Weight 1.79 CARAT Color Grade E Clarity Grade VS 2



ADDITIONAL GRADING INFORMATION Polish EXCELLENT Symmetry VERY GOOD Fluorescence NONE Inscription(s) LABGROWN IGI LG459122733

Comments: As Grown - No indication of post-growth treatment. This Laboratory Grown Diamond was created by High Pressure High Temperature (HPHT) growth process. Type II



IGI

02/03/2021 IGI Report No. LG459122733 OVAL BRILLIANT 9.56 x 6.95 x 4.28 mm 1.79 CARAT E VS 2 61.6% 58.5% Medium To Thick (Faceted) Pointed EXCELLENT VERY GOOD NONE LABGROWN IGI LG459122733

As Grown - No indication of post-growth treatment. This Laboratory Grown Diamond was created by High Pressure High Temperature (HPHT) growth process. Type II